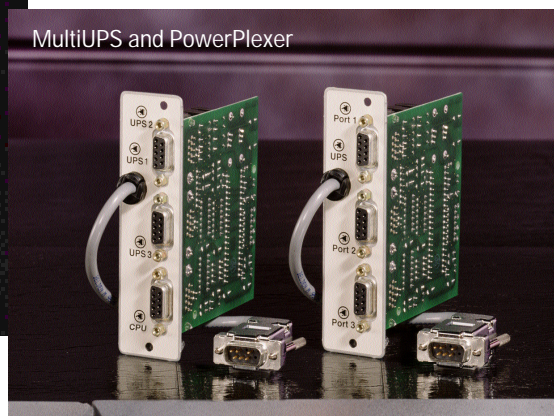
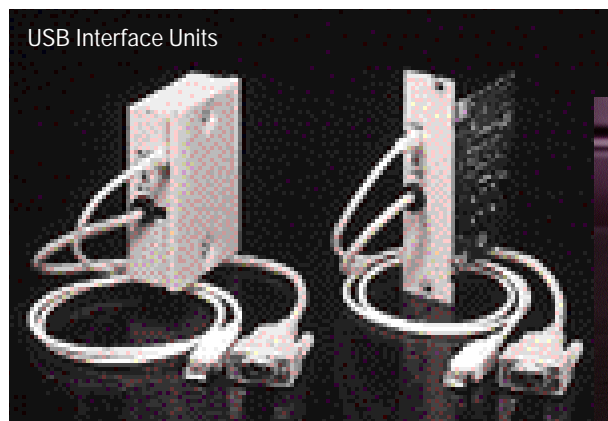




PowerComm™ Installable Options



Uninterruptible power systems (UPSs) aren't simply boxes with batteries that keep your equipment running when the lights go out. Rather, they are essential network components designed to protect both your equipment and priceless data. To maximize the network management capabilities of your UPS, Powerware has designed its line of connectivity devices called the PowerComm Installable Options.

As your network expands, so does your need for UPS capacity. The MultiUPS card provides scalability by allowing you to attach multiple UPSs to a single network device. If additional equipment exceeds current UPS capacity, simply use the MultiUPS to install another UPS. You do not need to replace your original UPS with a larger one.

The PowerPlexer card is equipped with multiple communication ports to facilitate communication between a single UPS and up to three network devices. With the PowerPlexer card, a single UPS is divided into three virtual UPSs which can be controlled independently.

The Universal Serial Bus (USB) Interface Unit allows you to connect your UPS to Windows 98 computers. Once Windows 98 recognizes the UPS, you simply install the Powerware USB driver which allows you to run the award-winning LanSafe III (for networks) or FailSafe III (for stand-alone computers) power management software. LanSafe III provides complete data protection by shutting down your computer and automatically saving work-in-progress throughout the network.

Product Overview

Each of the PowerComm Installable Options combines an innovative design with practical applications that enable you to expand network management capabilities while maximizing your UPS investment.

MultiUPS

- ▶ Scalability for your UPS
- ▶ Attach multiple UPSs to a single network

PowerPlexer

- ▶ Independently manage multiple network devices with one UPS
- ▶ Shutdown control in out-of-band situations

Universal Serial Bus (USB) Interface Unit

- ▶ Connect UPS to USB ports on Windows 98 computers



PowerPlexer™ Card

With the PowerPlexer card, you can serially connect up to three network devices to a single UPS. In combination with LanSafe III/ FailSafe III or OnliNet power management software, the PowerPlexer card divides a single UPS into as many as three virtual UPSs. As a result, you save money by eliminating the need to buy separate UPSs to attain serial communication for each network device. The PowerPlexer card also permits out-of-band communications with up to three servers even when the network is down.

Situation:

Need to add an additional server but want to have serial communication to a UPS. Do you need to add another one? (Standard UPS is equipped with one communications port).

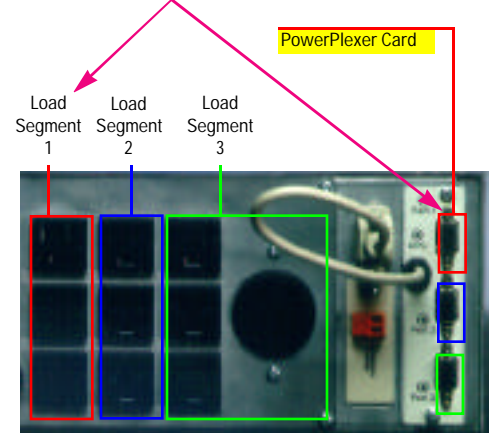
Rejected Option:

Buy a UPS for each new server.

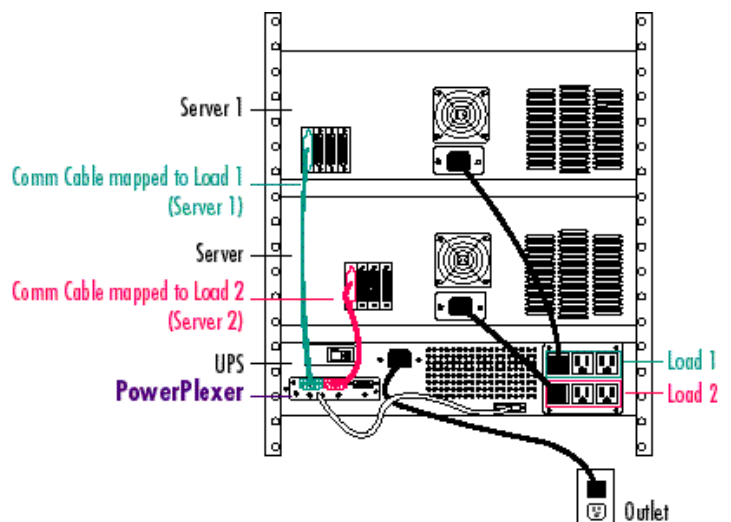
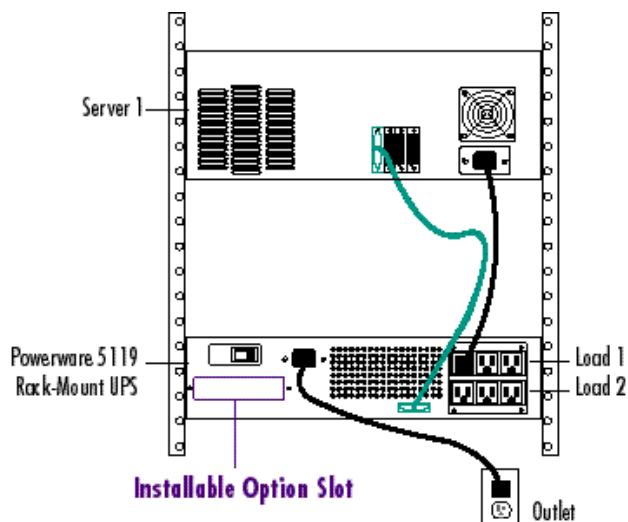
PowerPlexer Solution:

Install the PowerPlexer card and manage multiple servers with a single UPS via LanSafe III/FailSafe III or OnliNet power management software.

The PowerPlexer card is equipped with three communication ports that control separate groups of receptacles on the UPS called Load Segments. **Port 1** of the PowerPlexer card controls devices connected to **Load Segment 1** while **Port 2** controls devices connected to **Load Segment 2** and so on. Each Load Segment can be configured with its own independent startup and shutdown scheduling with LanSafe III/FailSafe III or OnliNet power management software.



The PowerPlexer installs easily into the rear panel of the Powerware 5105 and 5119. Powerware 5119 Rack-Mount model (PW5119 3K RM) shown above.





MultiUPS™ Card

Because evolving system needs may require a higher power level to accommodate an increased load, you can add the MultiUPS card, which enables up to three UPSs to be connected to one network device. This option provides power scalability and field upgradeability. Rather than having to purchase a new, larger UPS to increase capacity, you can connect a second and/or third UPS to achieve the right power level for your expanded system.

Situation:

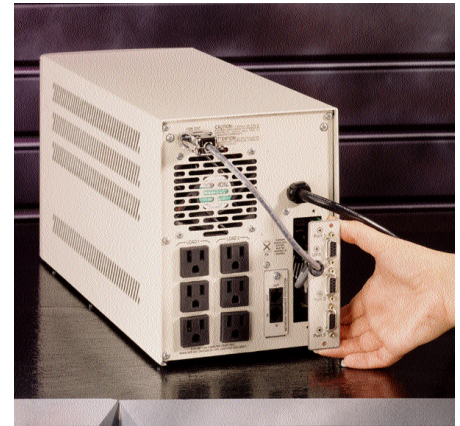
Need increased server capacity; need to replace current UPS with a larger UPS to support additional equipment?

Rejected Option:

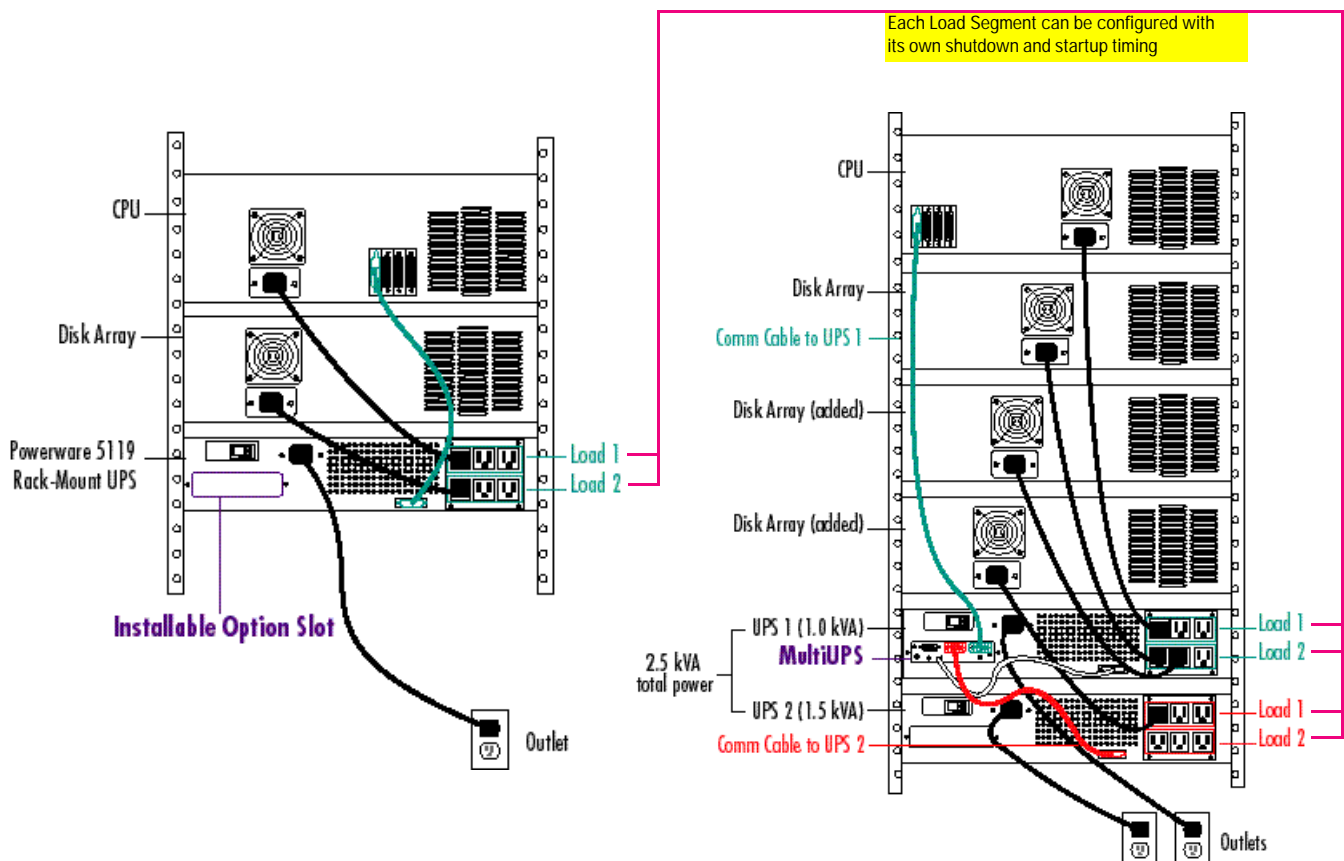
Throw away existing UPS and buy a larger UPS.

MultiUPS Solution:

You can leverage your existing UPS investment by adding another UPS and installing the MultiUPS card. This solution provides flexibility and eliminates the need to buy a larger UPS. In the example below, the CPU manages a single 2.5 kVA UPS with four Load Segments via LanSafe III/FailSafe III or OnliNet power management software.



The MultiUPS installs easily into the rear panel of the Powerware 5105 and 5119 UPSs. Powerware 5119 cabinet model PW5119 1000 shown above.

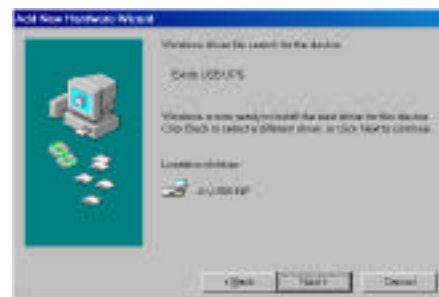


USB Interface Unit

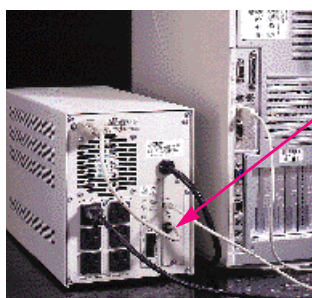
The universal serial bus (USB) Interface Unit allows you to connect your UPS to Windows 98 computers via a USB port. As with standard communication via serial ports, the USB port facilitates UPS monitoring and control with Powerware's LanSafe III/FailSafe III or OnliNet power management software.

The Powerware USB Interface Units connect to the serial port on the UPS, either with an external version or with an internal card, which installs conveniently into the installable option slot on Powerware 5105 and 5119 UPSs. The external device is shipped with a kit which enables you to mount the adapter to the side or top of the UPS. Each of the USB Interface Units can also be connected to

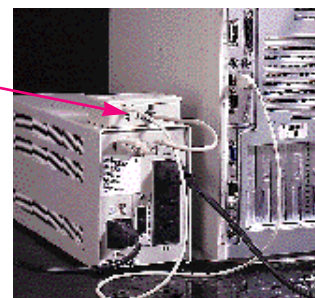
USB hubs equipped with multiple ports. As USB ports become more prevalent on computers and other network devices, look to Powerware to provide inexpensive USB solutions.



Once the UPS is connected to the USB port of a Windows 98 computer, you can install LanSafeIII/FailSafe III Power Management software (included with the USB Interface Unit).



USB model USB-INT fits conveniently into the option slot of the Powerware 5105 and 5119.



USB model USB-EXT is an external version designed for UPSs without an option slot.

PowerComm Model Selection Guide

Model No.	Description	Compatible UPSs ¹
MultiUPS		
COMM-MTU	Provides communication ports for up to three UPSs attached to a single UPS	<ul style="list-style-type: none"> Powerware 5105 Cabinet (1000/1500 VA) Powerware 5105 Rack-Mount Powerware 5105 Rack-Mount and Cabinet²
PowerPlexer		
COMM-PXR	Provides communication ports for up to three network devices attached to a single UPS	<ul style="list-style-type: none"> Powerware 5105 (1000/1500 VA) Powerware 5105 Rack-Mount Powerware 5119 Rack-Mount and Cabinet²
USB Interface Units		
USB-EXT	External USB module ³	<ul style="list-style-type: none"> Powerware 5105 Cabinet (450/700 VA). Powerware 9 Prestige
USB-INT	Internal USB module ³	<ul style="list-style-type: none"> Powerware 5105 Cabinet (1000/1500 VA) Powerware 5105 Rack-Mount Powerware 5119 Rack-Mount and Cabinet²

1. All UPSs listed below are bundled with LanSafe III/FailSafe III power management software. 2. Except 400 and 600 VA models. 3. UPS to USB connection: 6.0 ft. (1.8 m) DB9 (9 to 25-pin adapter for Prestige models). Host to USB connection: 6.0 ft (1.8 m) USB cable.

Brand or product names are trademarks or registered trademarks of their respective holders.

Powerware Corporation Corporate Headquarters

8609 Six Forks Road
Raleigh, NC 27615 U.S.A.
Toll Free: 1.877.PWRWARE
or 919.872.3020
Fax: 1.800.753.9433
or 919.870.3411
E-mail: info@powerware.com
www.powerware.com

Latin America/Caribbean

Sunrise, FL: 954.835.1180

Europe/Middle East/Africa

Berkshire, England: 44.1753.606700

Southeast Asia

Singapore: 65.861.9877

China and North Asia

Hong Kong: 852.2745.6682

Australia and South Pacific

Sydney, Australia: 61.2.9878.5000

Canada

Toronto, Ontario: 416.798.0062